

## BIG QUESTION – How can I light up a bulb?

### ELECTRICITY

Some components of an electric circuit

	Wire	cell	switch	buzzer	lamp
Circuit Diagram					
Picture					

Electricity can occur naturally



For example, lightning or static electricity

There are two types of electrical current that we use to power appliances.

Mains electricity

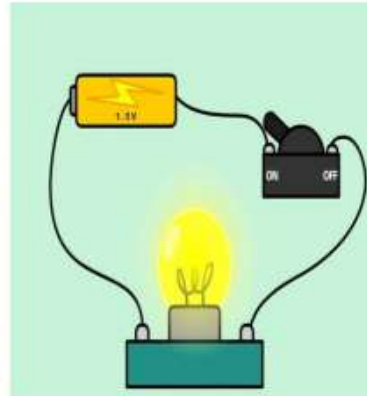


Batteries



### Electricity

An electric current, which is the flow of electric charge.



Some materials let electricity pass through them easily. These are known as **conductors**. Many metals are good electrical conductors such as copper, iron and steel.



### Key Vocabulary

Circuit

A system of electrical components that make up an electrical circuit

Cell

Converts energy to electricity

Wire

A length of material that conducts electricity

Bulb

A device that provides light when electricity passes through it

Appliance

A device designed to perform a task

Batteries

A collection of cells

Current

The steady flow of electrons

Voltage

A collection of cells

Some materials do **not** let electricity pass through them. These materials are known as **insulators**. Plastic, wood, glass and rubber are good electrical insulators.

