

Winter Knowledge Organiser- Reception

In **Reception** children will learn the following:

Seasons- Winter

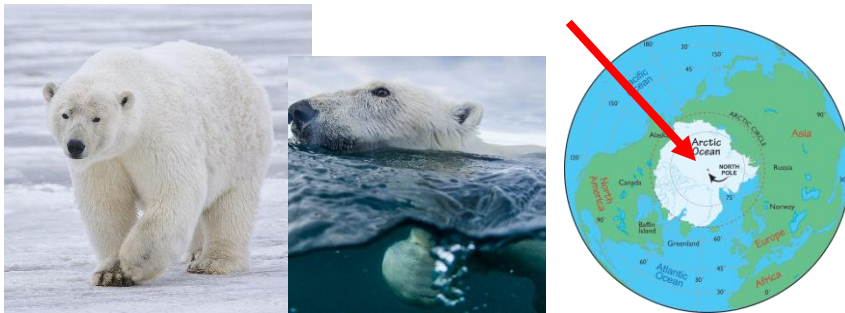
By the end of this topic, we want the children to have an embedded knowledge of the following:

- Know that in Winter the weather gets much colder.
- Know that some animals (squirrels, hedgehogs, bats, bears and box turtles) hibernate.
- Know that some animals have to hibernate due to the harsh weather conditions which may result in fatality.
- Know that in Winter, the temperature gets so cold and things being to freeze and turn icy.
- Know that Polar Bears live in the Arctic and can survive due to their warming features (see facts below).



By the end of this topic, the children will know the following facts about Polar Bears:

- Polar Bears live in the Arctic.
- Polar Bears have black skin to attract the heat, keeping them warm.
- Polar Bears have a thick layer of blubber to keep them warm in the cold climate.
- Polar Bears prey on seals to eat.
- Polar Bears can swim in the icy water for long periods of time.



Key vocabulary your child will learn and can define are:	
Winter	A cold season that begins after Autumn.
Hibernation	The period when an animal stays dormant (asleep) during the cold Winter months.
Weather	The change of state in the atmosphere. For example: rain, cloud, thunder, sunshine etc.
Temperature	Temperature is used to describe how cold or hot something is including the weather or food.
Climate	The weather conditions that occur over a long period of time.